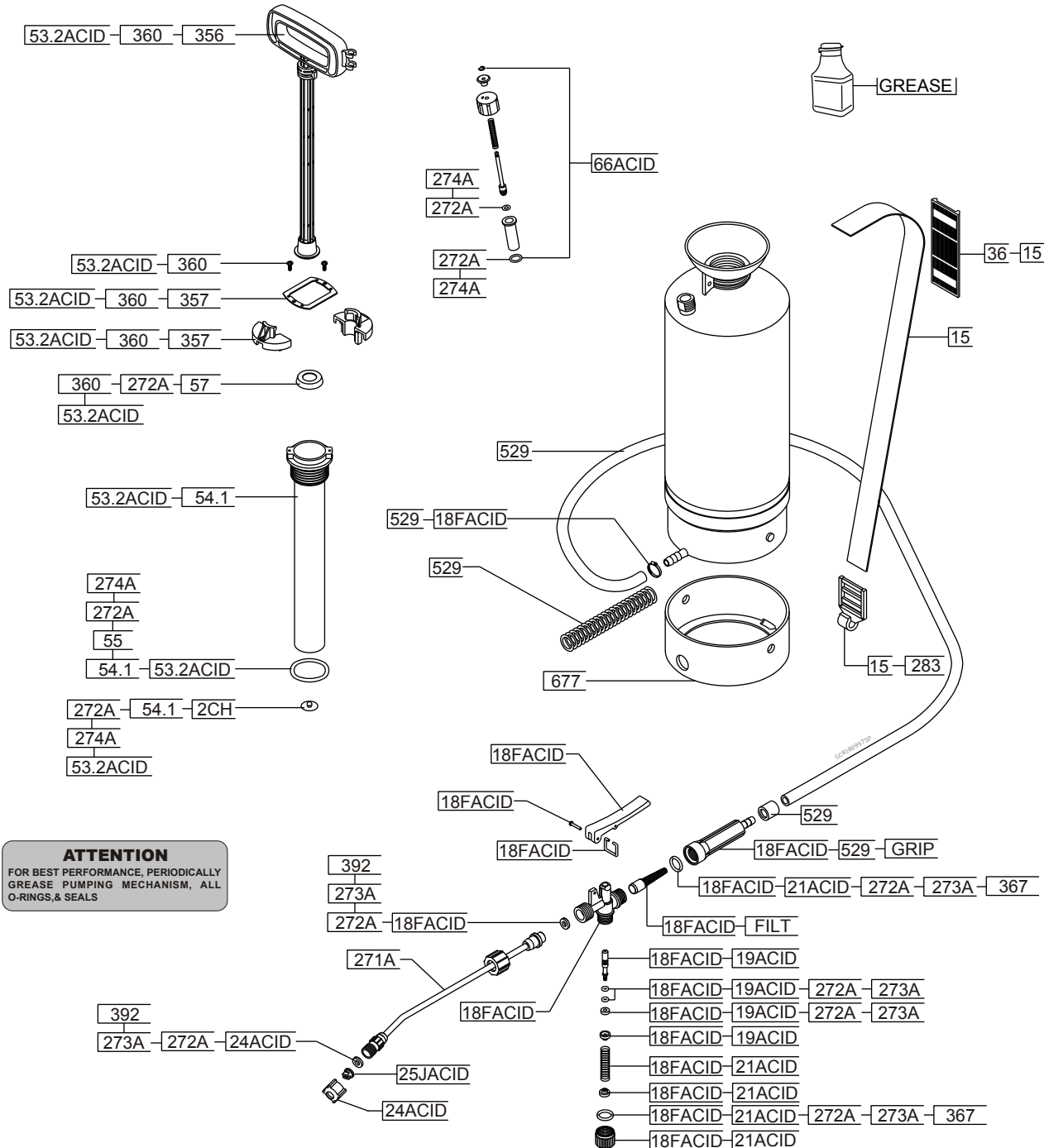


Parts list for the ACIDS 10/20 Compression Sprayers

SWISSMEX®
ACIDS 10

SWISSMEX®
ACIDS 20



ATTENTION
FOR BEST PERFORMANCE, PERIODICALLY
GREASE PUMPING MECHANISM. ALL
O-RINGS & SEALS

PARTS LIST	
Kit 2CH	Check valve for lid
Kit 15	Shoulder strap, pad, buckle & clip (1 each)
Kit 18FACID	Complete spray gun for acid
Kit 19ACID	Spindle set for acid
Kit 21ACID	Plug set & stainless steel spring
Kit 24ACID	Nozzle holder & washer
Kit 25JACID	Fan nozzle for acid
Kit 36	Shoulder pads for use with shoulder strap
Kit 53.2ACID	Complete pump module for acid
Kit 54.1	Pump tube with check valve & O-ring
Kit 55	Large O-ring for pump tube
Kit 57	Pump plunger
Kit 66ACID	Pressure relief valve
Kit 271A	PVC wand and fitting for acid
Kit 272A	Complete O-ring & seals for acid
Kit 273A	O-ring set for gun, wand, & nozzle
Kit 274A	O-ring set for pump tube & pressure relief valve
Kit 283	Shoulder strap clips
Kit 356	Pump handle
Kit 357	Pump tube caps (2)
Kit 360	Complete pump handle
Kit 367	O-rings (2) for gun grip
Kit 392	Washer set for spray guns
Kit 529	Flexible hose & grip filter
Kit 677	Gray tank base
Kit FILT	Filter replacement for Kit 18F
Kit GRIP	Grip replacement for Kit 18F
+Kit GREASE	Silicone grease lubricant for all sprayers.

NOTE: + Not supplied with unit see sheet of accessories.

SWISSMEX-RAPID, S.A. DE C.V.
Calle Swissmex No. 500
Col. Las Ceibas, 47440
Lagos de Moreno Jalisco,
México

Fax (474) 742-0856, 742-4185
☒ (474) 741-2200, 741-2201
741-2202

The ACIDS 10/20 Compression Sprayers

We would like to congratulate you on the purchase of your new ACIDS10/20. The sprayer that allows you the easiest most comfortable way of carry out spraying projects. You are the owner of the most reliable units made today. These units are designed to spray for over 10 minutes with only two sessions of 40 pump strokes.

- We strongly recommend you to carefully read and follow all the information on this sheet, the Warnings Sheet and the Trouble Shooting Guide (if needed). Also follow all instructions and MSDS (Material Safety Data Sheet) provided by the manufacturer of the chemical product used.

ASSEMBLY INSTRUCTION

1. Attach spray wand to spray gun and tighten firmly.
2. If unit is fitted with pressure valve, secure tightly.

HOW TO PREPARE YOUR ACIDS 10/20 FOR USE

1. Before you remove pump, be sure there is no pressure in the tank. In order to release pressure, invert unit upside down and squeeze spray pistol (aim away from you). Pressure will escape; when hissing stops, all pressure has been released. Remove pump assembly by turning counter-clockwise. The pump handle has two locking positions, one turning clockwise and one counter-clockwise.
2. Mix solution in a separate receptacle, following manufacturer's directions on the container.
3. Pour pre-mixed solution into sprayer; then put pump assembly back into sprayer and tighten down firmly. You are now ready to pressurize the sprayer.
4. The following chart will provide you with a guide for operating pressures. Approximate working pressures:

1 gallon unit.

40 full strokes +/- 42 psi

2 gallon unit.

35 full strokes +/- 35 psi

5. The pressure relief valve will release at 42 psi.
6. Spray pistol may be locked in the open position for continual spraying.

HOW TO ADJUST THE ACIDS10/20 NOZZLE

1. To adjust nozzle, tighten cap (turn clockwise) for fine atomized spray, or loosen (turn counter-clockwise) for coarser spray or solid stream.

EMPTYING TANK

1. Be sure there is no pressure in the tank (see How to Prepare your ACIDS 10/20 for Use, #1).

HOW TO CLEAN AND MAINTAIN YOUR ACIDS 10/20.

1. Release pressure as previously indicated.
2. Remove pump module and pour out remaining solution; then rinse all parts thoroughly with clean water.
3. Leaving approximately ½ gallon of fresh water in tank, pressurize and flush the hose and wand by depressing trigger to clean out system; then drain all remaining water.
4. Always store tank clean and empty, and in a dry and shaded location.

PUMP MAINTENANCE

1. Pump seals should be lubricated periodically to insure proper lubrication and seal life.
2. If pumping does not pressurize the tank, remove pump from tank; then remove the two screws from top of pump module. Pull plunger out and inspect seals. If damaged, obtain original **SWISSMEX** replacement parts from your dealer and replace.
3. Oil new seals and insert back into pump module. Tighten both screws. You are now ready to use your sprayer.