

KOLOUR DYE™

DECORATIVE CONCRETE
COLOR DYE SYSTEM

www.southernstainandseal.com/concrete-acetone-dye

- Shown on textured broom-swept concrete



Light Gray*



Medium Gray*



Dark Gray*



Lime*



Sun Buff*



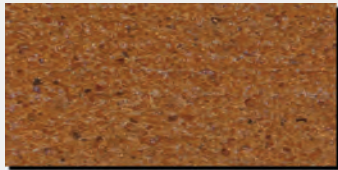
Buff*



Taupe*



Teal*



Raw Sienna



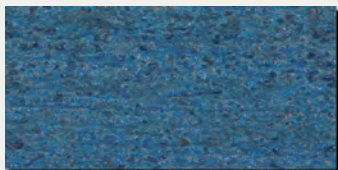
Black



Chestnut



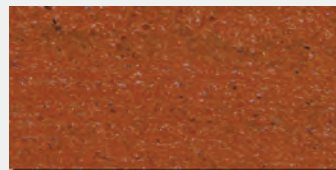
Chocolate Brown



Glacier



Forrest Green



Burnt Sienna



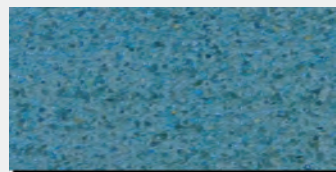
Eggplant



Dixie Red



Sand



Turquoise



Saddle Brown



Terra Cotta



Gold



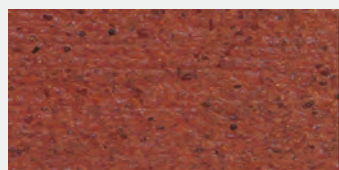
Midnight Black



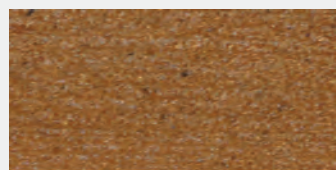
Slate Blue



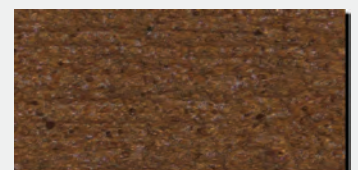
Green



Mahogany



Caramel



Walnut

* Only available in liquid Concrete Kolour Dye. Not available in Interior Kolour Dye Polishing Powder.

The color samples above are digital representations of actual color samples. Due to variations in concrete composition, age, surface conditions, surface preparation, product mixing, application techniques and choice of sealer, exact colors WILL vary. Always test prior to use to ensure desired results!

KOLOUR DYE™

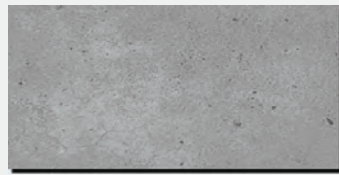
DECORATIVE CONCRETE
COLOR DYE SYSTEM

www.southernstainandseal.com/concrete-acetone-dye

- Shown on smooth profiled concrete



Light Gray*



Medium Gray*



Dark Gray*



Lime*



Sun Buff*



Buff*



Taupe*



Teal*



Raw Sienna



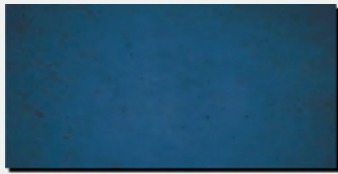
Black



Chestnut



Chocolate Brown



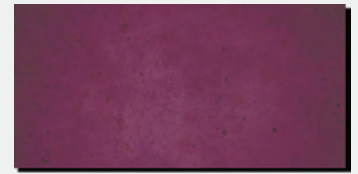
Glacier



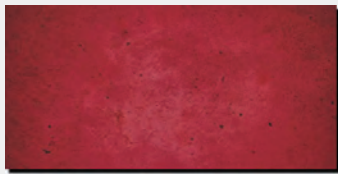
Forrest Green



Burnt Sienna



Eggplant



Dixie Red



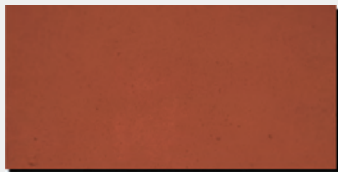
Sand



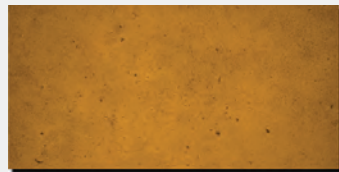
Turquoise



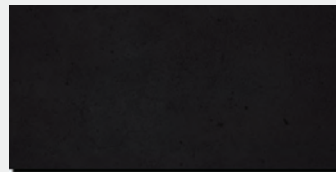
Saddle Brown



Terra Cotta



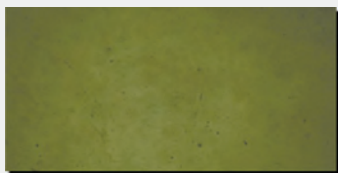
Gold



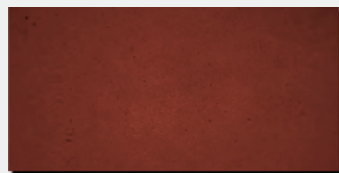
Midnight Black



Slate Blue



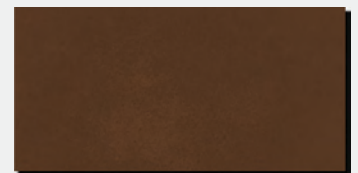
Green



Mahogany



Caramel



Walnut

* Only available in liquid Concrete Kolour Dye. Not available in Interior Kolour Dye Polishing Powder.

The color samples above are digital representations of actual color samples. Due to variations in concrete composition, age, surface conditions, surface preparation, product mixing, application techniques and sealer choice, exact colors WILL vary. ALWAYS test prior to use to ensure desired results!